

# Upute za instalaciju RW sustava



## Zahtjevi

Jedan od sljedećih Windows operativnih sustava:

- Windows Vista SP2 Professional, Ultimate.
- Windows XP Professional SP3
- Windows 7 Professional, Ultimate (preporučeno)
- Windows 8 i 8.1
- Windows 10

RW sustav zahtijeva Microsoft .NET (verzija 4.0) framework i možete ga dobiti ovdje: <https://dotnet.microsoft.com/download/dotnet-framework/net40>

Preporučujemo da koristite višejezgrene procesore, minimalno 1 GB RAM memorije i profesionalni audio hardver. Dobit ćete manje kašnjenja, brži odziv i bolje performanse zvuka. Dobra je praksa napraviti „čistu“ instalaciju operativnog sustava, te onemogućiti sve nepotrebne aplikacije i servise.



## 1. Instalirajte bazu podataka

RW sustav koristi MySQL ili MariaDB bazu podataka. MySQL Community izdanje je besplatno i možete ga nabaviti ovdje (x64 ili x86 verzija):

### MySQL

<https://downloads.mysql.com/archives/get/p/23/file/mysql-5.5.62-winx64.msi>

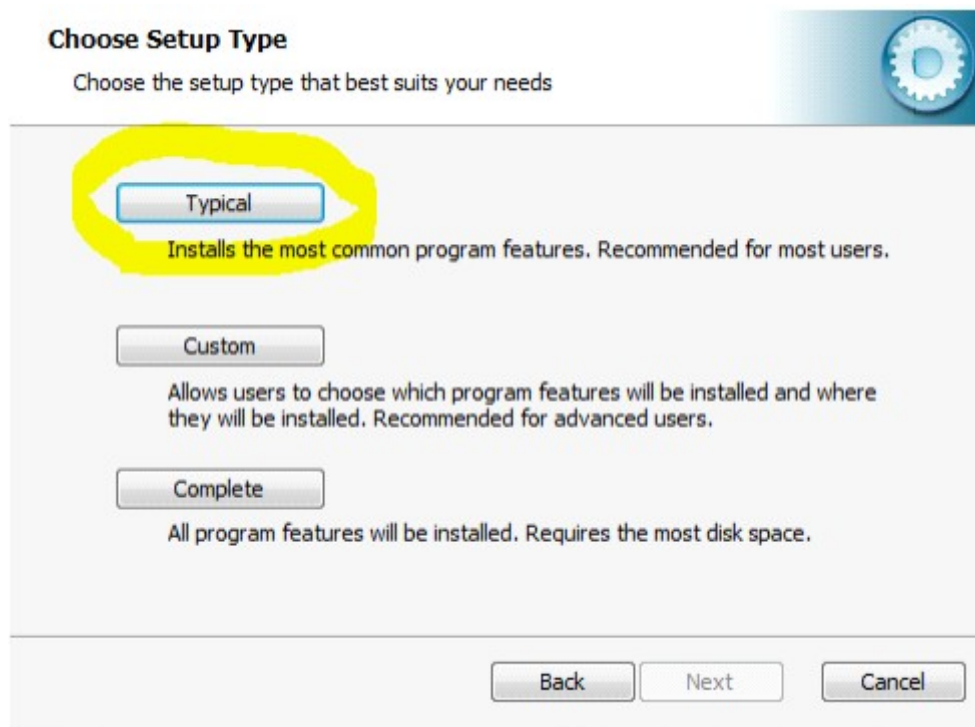
<https://downloads.mysql.com/archives/get/p/23/file/mysql-5.5.62-win32.msi>

### MariaDB

<https://downloads.mariadb.com/MariaDB/mariadb-5.5.68/winx64-packages/mariadb-5.5.68-winx64.msi>

<https://downloads.mariadb.com/MariaDB/mariadb-5.5.68/win32-packages/mariadb-5.5.68-win32.msi>

Instalirajte MySQL i nastavite s MySQL čarobnjakom za konfiguraciju.



Neke od postavki moraju biti konfigurirane tijekom procesa čarobnjaka za konfiguraciju mysql i prikazane su na slikama ispod.

## MySQL Server Instance Configuration

Configure the MySQL Server 5.5 server instance.



Please select a server type. This will influence memory, disk and CPU usage.

### Developer Machine



This is a development machine, and many other applications will be run on it. MySQL Server should only use a minimal amount of memory.

### Server Machine



Several server applications will be running on this machine. Choose this option for web/application servers. MySQL will have medium memory usage.

### Dedicated MySQL Server Machine



This machine is dedicated to run the MySQL Database Server. No other servers, such as a web or mail server, will be run. MySQL will utilize up to all available memory.

< Back

Next >

Cancel

## MySQL Server Instance Configuration

Configure the MySQL Server 5.5 server instance.



Please set the networking options.

### Enable TCP/IP Networking



Enable this to allow TCP/IP connections. When disabled, only local connections through named pipes are allowed.

Port Number: 3306

Add firewall exception for this port

Please set the server SQL mode.

### Enable Strict Mode

This option forces the server to behave more like a traditional database server. It is recommended to enable this option.

< Back

Next >

Cancel

## MySQL Server Instance Configuration

Configure the MySQL Server 5.5 server instance.



Please select the default character set.

### Standard Character Set



Makes Latin1 the default charset. This character set is suited for English and other West European languages.

### Best Support For Multilingualism



Make UTF8 the default character set. This is the recommended character set for storing text in many different languages.

### Manual Selected Default Character Set / Collation



Please specify the character set to use.

Character Set:

< Back

Next >

Cancel

## MySQL Server Instance Configuration

Configure the MySQL Server 5.5 server instance.



Please set the security options.

### Modify Security Settings



New root password:

Enter the root password.

Confirm:

Retype the password.

Enable root access from remote machines

### Create An Anonymous Account



This option will create an anonymous account on this server. Please note that this can lead to an insecure system.

< Back

Next >

Cancel

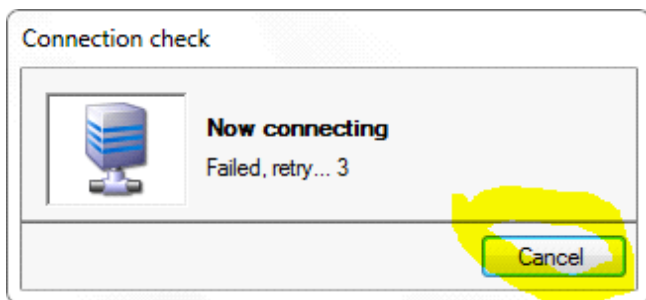
Unesite lozinku\* za bazu podataka i označite „Omogući root pristup s udaljenih računala“. Kliknite dalje i čarobnjak za konfiguraciju MySQL će spremiti konfiguraciju baze podataka i pokrenuti MySQL uslugu.

**NAPOMENA:** Zapamtite lozinku svoje baze podataka ili je zapišite negdje!\*

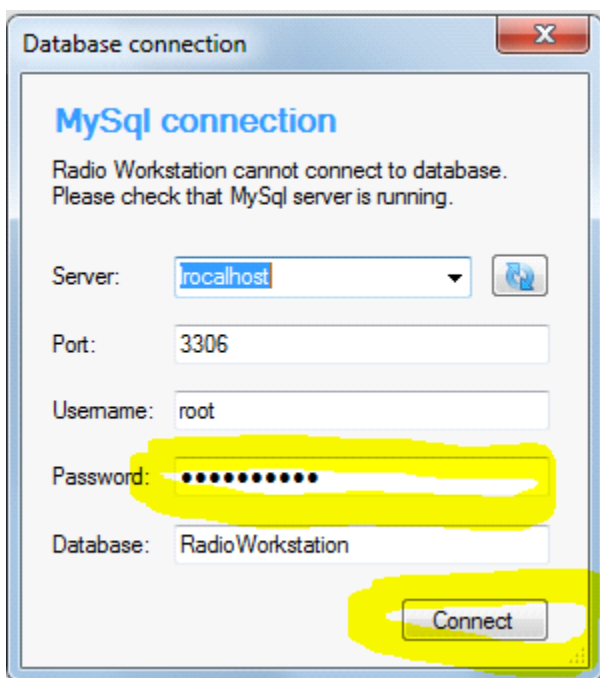
## 2. Instalirajte vacard virtualni audio upravljački program (VacardSetup.exe)

Pokrenite postavljanje i potvrdite sve dijaloške okvire.

## 3. Instalirajte RW ONAIR (OnairSetup.exe)



Pokrenite RW Onair iz izbornika Start ili ikone na radnoj površini. U prozoru „Provjera veze“ kliknite na „Odustani“. RW Onair će obavijestiti RW Onair će vas obavijestiti o pogrešci MySQL veze. To je normalno jer još nije stvorena baza podataka. Kliknite „otkaži“.

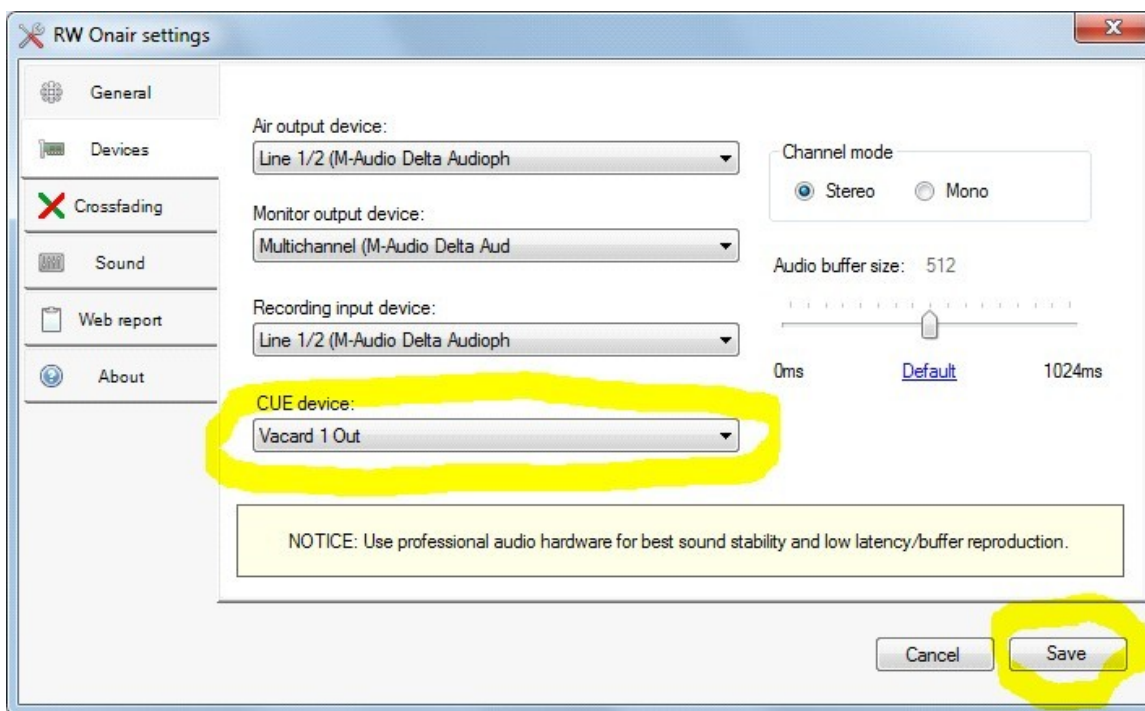


Prikazat će se prozor „Database connection“. Unesite lozinku svoje baze podataka\* (ne morate ništa mijenjati), a zatim kliknite „Poveži se“.

RW Onair će sada kreirati bazu podataka i spremi postavke veze.

**NAPOMENA:** Ako veza ne uspije, pokušajte upisati „127.0.0.1“ u polje „server“.

Sada otvorite "Postavke" i idite na karticu "Uređaji". U padajućem izborniku „CUE uređaj“ odaberite „Vacard 1 Out“, a zatim kliknite gumb „Spremi“ za spremanje konfiguracije.



## ***INSTALIRAJ RW SCHEDULER (SchedulerSetup.exe)***

RW je sada spreman za rad!

**NAPOMENA:** Aplikaciju RW Scheduler možete instalirati na bilo koje drugo računalo u vašoj lokalnoj mreži. Samo postavite u polje „host“ veze baze podataka s imenom računala na kojem je instaliran MySQL.

Windows, Microsoft, MySQL i MariaDB zaštitni su znakovi odgovarajućih vlasnika. Verzija dokumenta: 3.2020.

Za pitanja i podršku kontaktirajte nas putem e-maila:  
[perkovic.tomislav@gmail.com](mailto:perkovic.tomislav@gmail.com)

Web stranica:  
[www.creatixbih.com](http://www.creatixbih.com)